

MANOR COURT, HARMONDSWORTH - MASTERPLAN

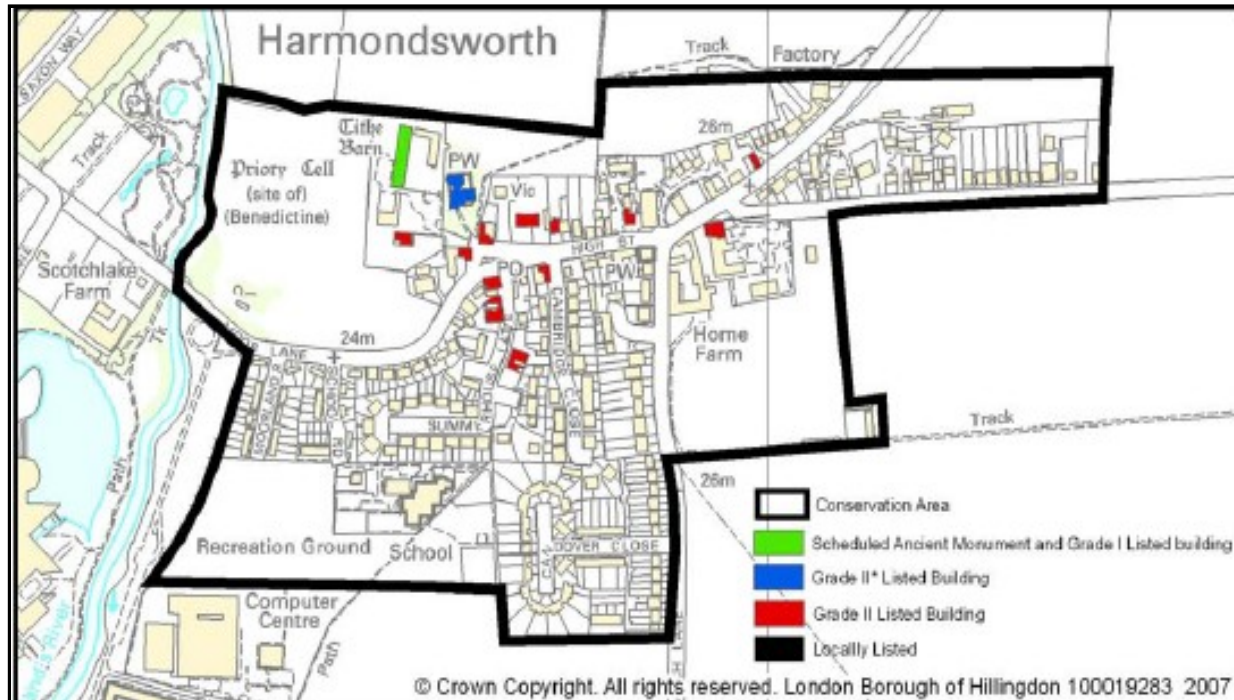


First thoughts on a
conservation and
development strategy



Tangram Architects Limited

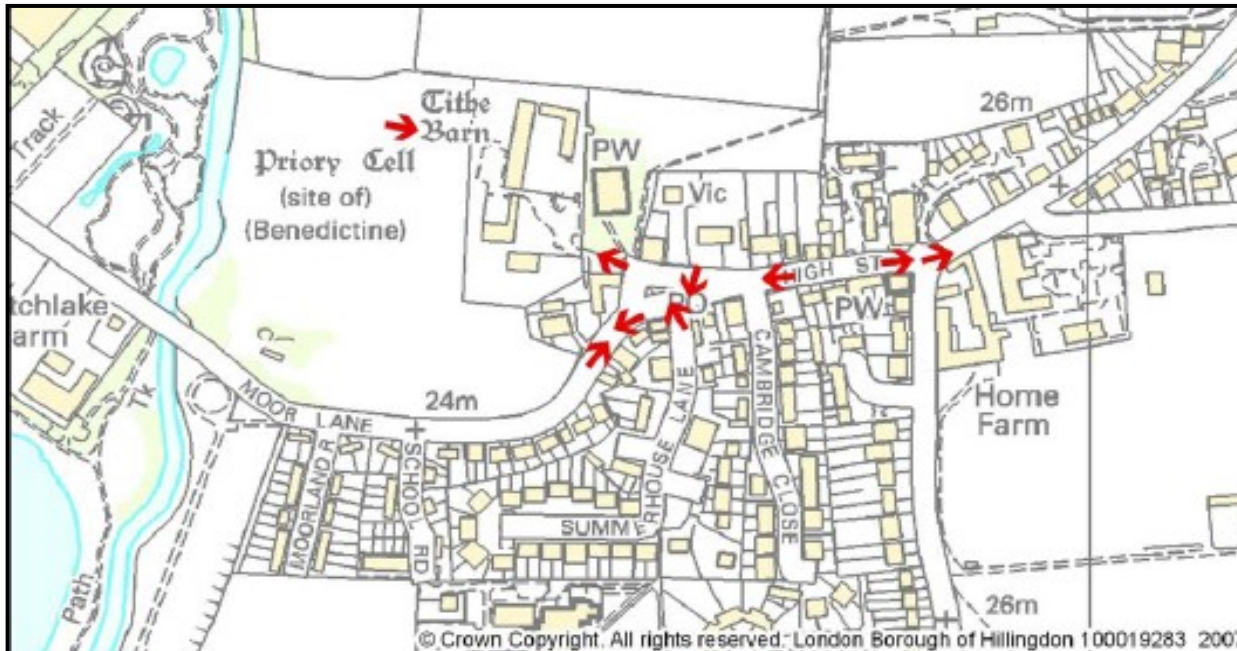
MANOR COURT, HARMONDSWORTH - MASTERPLAN



- Listed Buildings

Extract from Conservation Area Appraisal -2007

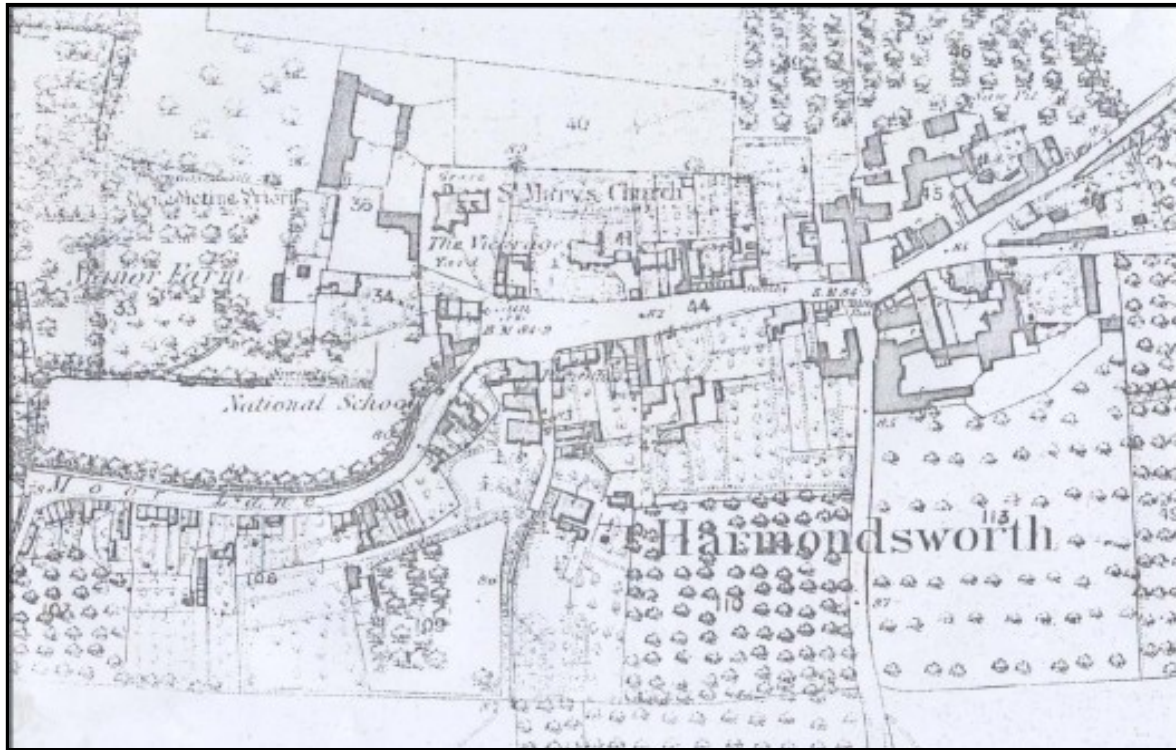
MANOR COURT, HARMONDSWORTH - MASTERPLAN



- View from Prospect Park
- View into Manor Court

Extract from Conservation Area Appraisal - 2007

MANOR COURT, HARMONDSWORTH - MASTERPLAN



- Building One
- Stable Block
- Buildings in location of current Block Three
- Large building opposite Stable block - no Granary
- Extensions to Barn
- Boundaries different

Historical Map 1866

MANOR COURT, HARMONDSWORTH - MASTERPLAN



View into Manor Court



Building One

MANOR COURT, HARMONDSWORTH - MASTERPLAN



Building Two



Great Barn with Building Three

MANOR COURT, HARMONDSWORTH - MASTERPLAN

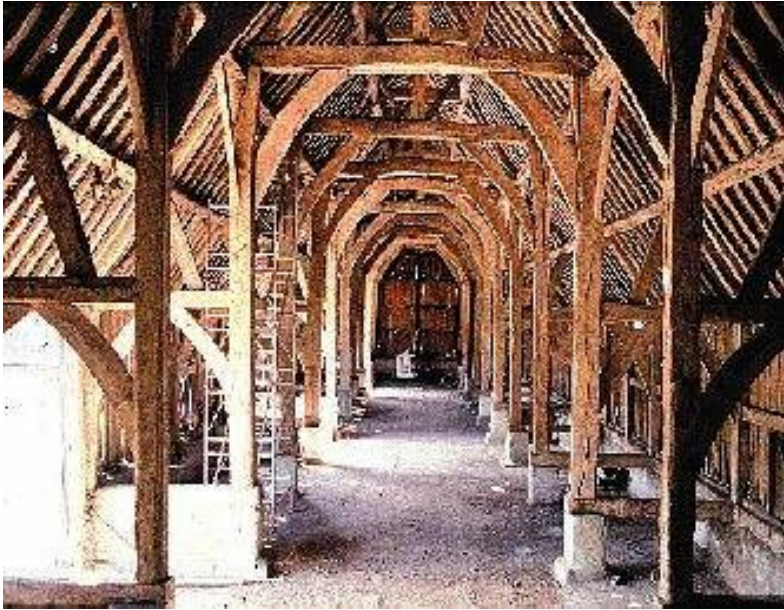


Granary

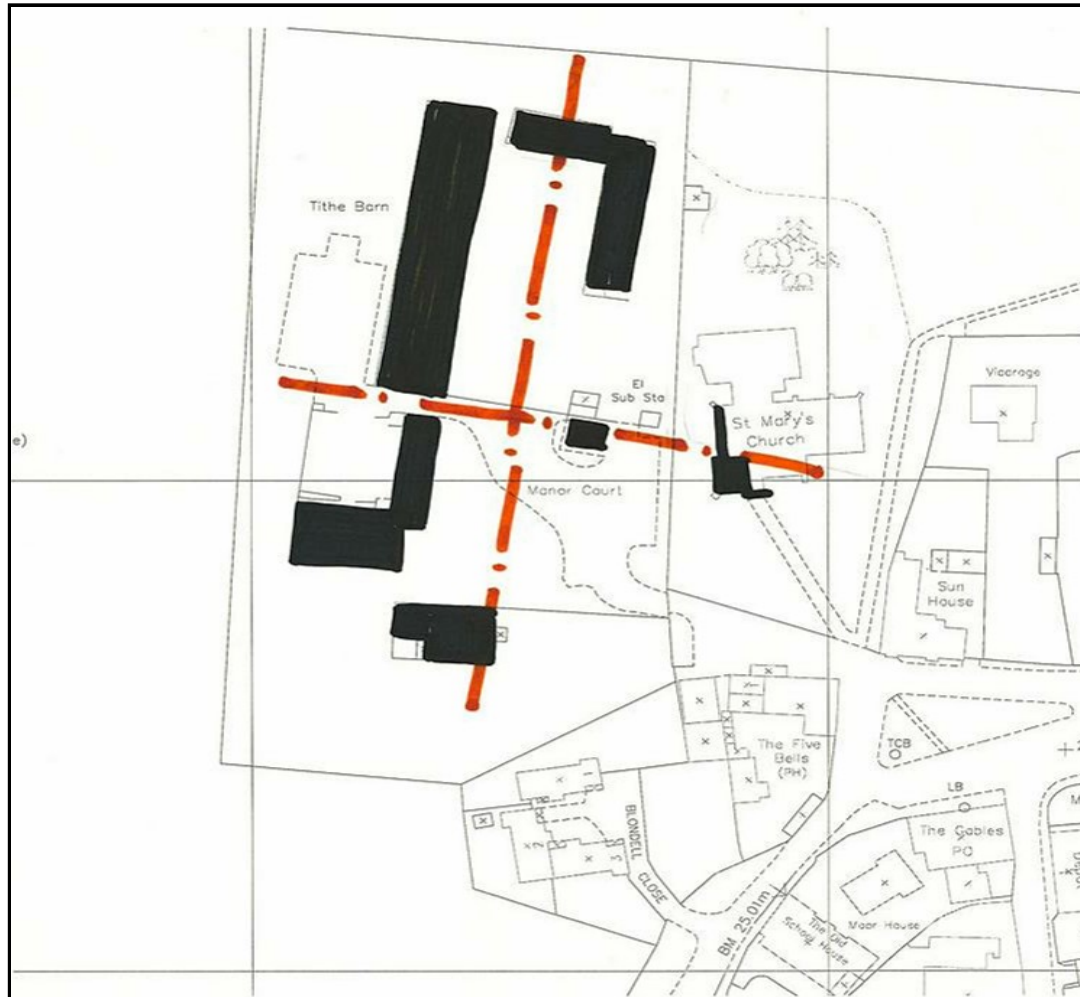


Church Tower

MANOR COURT, HARMONDSWORTH - MASTERPLAN



MANOR COURT, HARMONDSWORTH - MASTERPLAN



- Barn creates strong N/S axis
- E/W axis pinned on Church Tower

Site Analysis

MANOR COURT, HARMONDSWORTH - MASTERPLAN



Buildings define spaces of different character

- Landscaped/gardens at entrance
- Rustic/farm next to Barn
- Open/natural space to west of Barn

MANOR COURT, HARMONDSWORTH - MASTERPLAN



Suggested development areas preserving the axial nature and spatial character

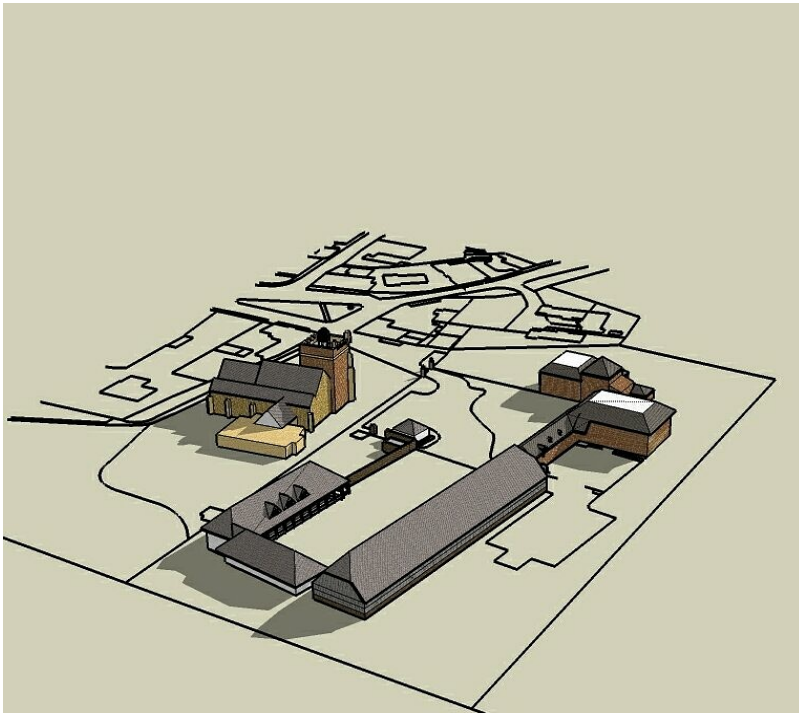
MANOR COURT, HARMONDSWORTH - MASTERPLAN



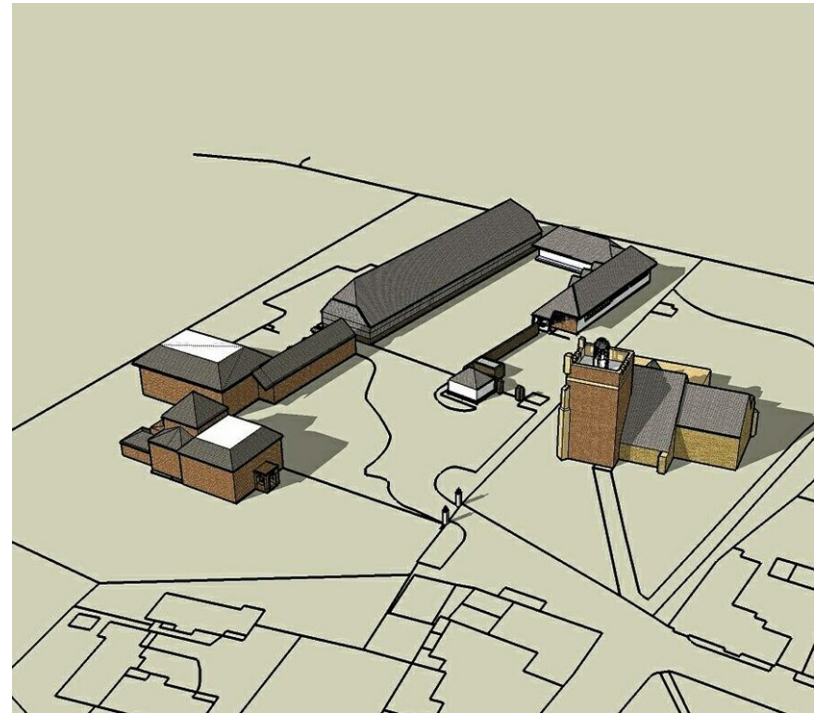
Conjectural Block Plan new development largely behind existing building lines

- Spaces preserved
- Private spaces created
- Great Barn as Event Venue (Ruislip example)

MANOR COURT, HARMONDSWORTH - MASTERPLAN



Existing - North

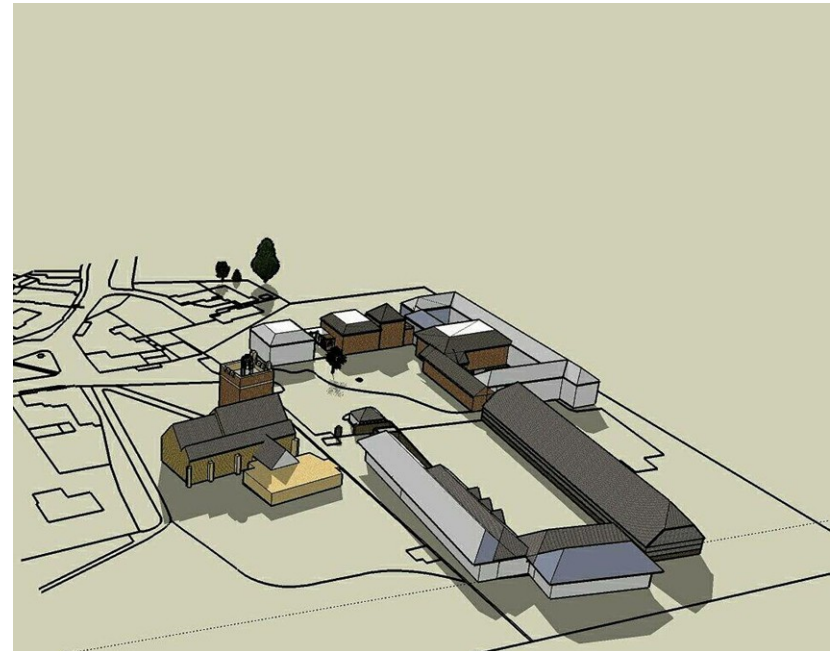


Existing - South

MANOR COURT, HARMONDSWORTH - MASTERPLAN



Proposed - South



Proposed - North